



## 12 Samarium Kobalt Magnete

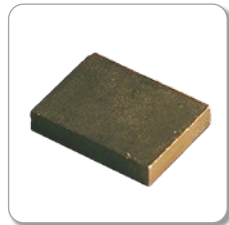
**Der «Problemlöser» Magnet für anspruchsvolle Anwendungen**

- Beste magnetische Stabilität
- Grosser Temperaturbereich
- Geringer Temperaturgang in der Remanenz
- Oxydationsresistent
- Enge Toleranzen in den Abmessungen möglich
- Beachten der Sprödhheit des Materials im Handling und Gebrauch

**Sm<sub>2</sub>Co<sub>17</sub>**



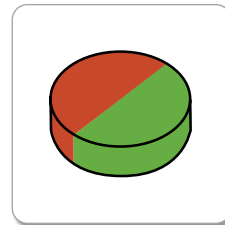
Scheibenmagnete



Quadermagnete



Ringmagnete



Diametral magnetisierte Magnete

**Übersicht –  
Alle Kapitel**

 **Kunden-  
spez. Anfrage\***

**\*Kundenspezifische Magnetanfrage, Werkslieferung**  
Abmessung / Form / Material / Magnetisierung /  
SmCo5 / nach Zeichnung...

**Technische  
Informationen**

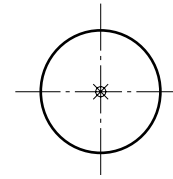
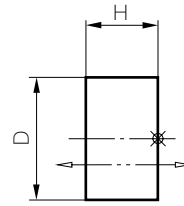


## Scheibenmagnete


Werkstoff: **Sm<sub>2</sub>Co<sub>17</sub> / Samarium Kobalt**

\*gerechnete Werte (10 N = ~1kg)

Ausführung: roh, Höhe geschliffen, axial magnetisiert



M415.8

Abmessungen ±0.1mm		Werkstoff	Bestell-Nr.	Temperatur	*Hubkraft	Gewicht
D	H		 <a href="#">Kundenspez. Anfrage</a>	max. C	N	g
2.5	1.5	Sm26/16-17	<a href="#">M400.8</a>	300°	1.7	0.06
3.0	2.0	Sm26/16-17	<a href="#">M410.8</a>	300°	2.6	0.12
4.0	1.5	Sm26/16-17	<a href="#">M411.8</a>	300°	2.6	0.16
4.0	3.0	Sm26/16-17	<a href="#">M419.8</a>	300°	5.1	0.32
5.0	1.5	Sm26/16-17	<a href="#">M408.8</a>	300°	3.0	0.25
5.0	2.0	Sm26/16-17	<a href="#">M412.8</a>	300°	4.5	0.33
5.0	3.0	Sm26/16-17	<a href="#">M413.8</a>	300°	6.8	0.49
5.0	9.0	Sm26/16-17	<a href="#">M409.8</a>	300°	10.6	1.48
5.45	4.0	Sm26/16-17	<a href="#">M401.8</a>	300°	9.3	0.78
6.0	2.0	Sm26/16-17	<a href="#">M426.8</a>	300°	5.1	0.48
6.0	3.0	Sm26/16-17	<a href="#">M427.8</a>	300°	8.3	0.71
7.0	3.0	Sm26/16-17	<a href="#">M414.8</a>	300°	9.5	0.97
8.0	5.0	Sm26/16-17	<a href="#">M402.8</a>	300°	17.9	2.11
10.0	2.0	Sm26/16-17	<a href="#">M407.8</a>	300°	6.3	1.32
10.0	3.0	Sm26/16-17	<a href="#">M415.8</a>	300°	12.1	0.98
10.0	4.0	Sm26/16-17	<a href="#">M403.8</a>	300°	17.8	2.64
10.0	5.0	Sm26/16-17	<a href="#">M416.8</a>	300°	22.9	3.30
12.0	3.0	Sm26/16-17	<a href="#">M428.8</a>	300°	13.1	2.85
13.8	3.0	Sm26/16-17	<a href="#">M404.8</a>	300°	13.8	3.77
15.0	5.0	Sm26/16-17	<a href="#">M417.8</a>	300°	31.8	7.42
18.0	4.0	Sm26/16-17	<a href="#">M429.8</a>	300°	24.4	8.55
20.0	4.0	Sm26/16-17	<a href="#">M405.8</a>	300°	25.4	10.56
20.0	5.0	Sm26/16-17	<a href="#">M418.8</a>	300°	36.5	13.19
24.0	4.0	Sm26/16-17	<a href="#">M406.8</a>	300°	26.5	15.20

Übersicht –  
Alle Kapitel

 [Kunden-  
spez. Anfrage](#)

Technische  
Informationen

 top



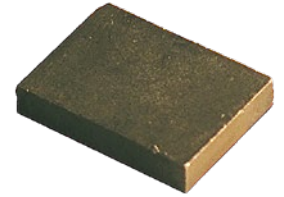
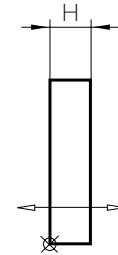
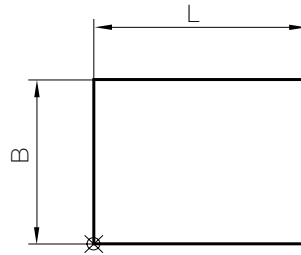


## Quadermagnete


Werkstoff: **Sm<sub>2</sub>Co<sub>17</sub>/Samarium Kobalt**

\*gerechnete Werte (10 N = ~1kg)

Ausführung: Polfläche geschliffen,  
durch Dicke magnetisiert



M477.8

Abmessungen ±0.1mm			Werkstoff	Bestell-Nr.	Temperatur max. C	*Hubkraft N	Gewicht g
L	B	H					
2.0	2.0	1.0	Sm26/16-17	 <b>M470.8</b>	300°	1.0	0.03
3.0	2.0	1.0	Sm26/16-17	<b>M430.8</b>	300°	1.3	0.05
3.0	3.0	2.0	Sm26/16-17	<b>M432.8</b>	300°	3.1	0.15
4.0	4.0	2.0	Sm26/16-17	<b>M473.8</b>	300°	4.1	0.27
5.0	4.5	1.5	Sm26/16-17	<b>M472.8</b>	300°	3.2	0.28
5.0	5.0	3.0	Sm26/16-17	<b>M482.8</b>	300°	7.8	0.63
6.0	3.0	1.0	Sm26/16-17	<b>M471.8</b>	300°	1.9	0.15
6.0	3.0	2.0	Sm26/16-17	<b>M424.8</b>	300°	4.7	0.30
10.0	6.0	5.0	Sm26/16-17	<b>M431.8</b>	300°	20.4	2.52
10.0	7.0	2.0	Sm26/16-17	<b>M474.8</b>	300°	6.7	1.18
10.0	10.0	3.0	Sm26/16-17	<b>M475.8</b>	300°	13.1	2.52
12.0	9.0	2.5	Sm26/16-17	<b>M476.8</b>	300°	10.2	2.27
16.0	12.0	3.0	Sm26/16-17	<b>M477.8</b>	300°	15.2	4.84
18.0	16.0	4.0	Sm26/16-17	<b>M478.8</b>	300°	25.6	9.68
20.0	10.0	4.8	Sm20/18-5	<b>M452214</b>	250°	24.0	8.00
25.0	23.8	8.5	Sm28/25-17	<b>M412801</b>	300°	99.0	41.10
26.0	21.0	5.0	Sm26/16-17	<b>M479.8</b>	300°	41.5	22.93
30.0	10.0	6.0	Sm26/16-17	<b>M480.8</b>	300°	61.8	15.12
30.0	24.8	4.5	Sm28/25-17	<b>M412802</b>	300°	36.0	28.10
30.0	24.8	6.0	Sm28/25-17	<b>M412803</b>	300°	61.0	37.50
32.0	27.0	6.0	Sm26/16-17	<b>M481.8</b>	300°	60.4	43.55
50.0	19.8	9.0	Sm28/25-17	<b>M412804</b>	300°	155.0	74.80
75.0	10.0	8.0	Sm28/20-17	<b>M412718</b>	300°	180.0	47.00

Übersicht –  
Alle Kapitel

 Kundenspez. Anfrage

Technische  
Informationen

↑top



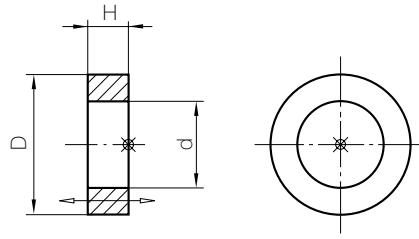


## Ringmagnete


Werkstoff: **Sm<sub>2</sub>Co<sub>17</sub>/Samarium Kobalt**

\*gerechnete Werte (10 N = ~1kg)

Ausführung: roh, axial magnetisiert, Höhe geschliffen



M421.8

Abmessungen ±0.1mm			Werkstoff	Bestell-Nr.	Temperatur	*Hubkraft	Gewicht
D	d	H			max. C	N	g
11.0	6.8	3.2	Sm26/16-17	<b>M420.8</b>	300°	22.1	1.6
19.5	5.4	3.0	Sm26/16-17	<b>M421.8</b>	300°	33.6	6.9
28.0	10.3	12.0	Sm26/16-17	<b>M423.8</b>	300°	195.1	53.7

Übersicht –  
Alle Kapitel

 Kunden-  
spez. Anfrage

Technische  
Informationen

 top

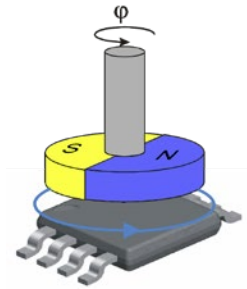
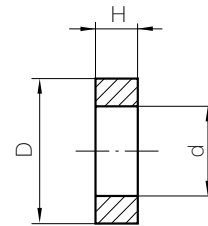
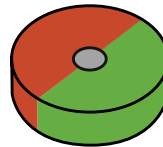
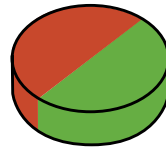





## Diametral magnetisierte Magnete für berührungslose Drehwinkel-Anwendungen

(für Produkte aus der Serie Melexis Triaxis sowie MPS MagAlpha)

Ausführung in NdFeB, schwarz epoxy beschichtet;  
Ausführung in SmCo, roh, unbeschichtet.  
Alle Magnete sind diametral magnetisiert!



Abmessungen $\pm 0.05\text{mm}$			Werkstoff	Bestell-Nr. 	Temperatur max. C	Gewicht g	Beschichtung
D	d	H					
4.0	–	3.0	N35	<b>M610403</b>	80	0.28	epoxy
4.0	–	3.0	Sm26/16-17	<b>M410403</b>	300	0.32	roh
5.0	–	2.5	N35	<b>M610502</b>	80	0.36	epoxy
5.0	–	2.5	Sm26/16-17	<b>M410502</b>	300	0.41	roh
5.0	1.25	2.5	N35	<b>M610512</b>	80	0.34	epoxy
5.0	1.25	2.5	Sm26/16-17	<b>M410512</b>	300	0.39	roh
6.0	–	2.5	N35	<b>M610602</b>	80	0.52	epoxy
6.0	–	2.5	Sm26/16-17	<b>M410602</b>	300	0.59	roh
6.0	1.5	2.5	N35	<b>M610612</b>	80	0.49	epoxy
6.0	1.5	2.5	Sm26/16-17	<b>M410612</b>	300	0.56	roh
6.0	1.5	3.0	N35	<b>M610613</b>	80	0.59	epoxy
6.0	1.5	3.0	Sm26/16-17	<b>M410613</b>	300	0.67	roh
8.0	–	2.5	N35	<b>M610802</b>	80	0.93	epoxy
8.0	–	2.5	Sm26/16-17	<b>M410802</b>	300	1.06	roh
10.0	7.0	3.0	N42 1)	<b>M643003</b>	80	25.20	NiCuNi

Andere Dimensionen, Materialqualitäten und Ausführungen auf Anfrage.

1) diametral magnetisiert

Übersicht –  
Alle Kapitel

 Kunden-  
spez. Anfrage

Technische  
Informationen

 top

