



## 23 Sandwich magnets

### Plastoneodym



Sandwich magnets, extra strong  
120°C

### Plastoferrites



Sandwich magnets  
100°C

### AlNiCo



Magnetic strips  
500°C

### HF 28/15



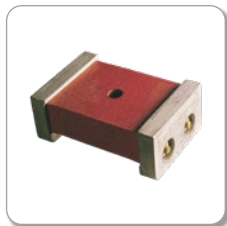
Magnetic roll  
150°C

### Ferrite



Powerful magnets  
100°C

### AlNiCo



Fixing magnets  
500°C

Overview –  
All chapter

 Your enquiry\*

\*Your enquiry  
Size / material / magnetization / coating /  
working temperature / after drawing...

Technical  
informations




## Sandwich magnets, extra strong

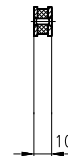
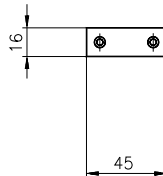
Materials: **Plastoneodym PN60/72**, soft iron


Values (10 N = ~1kg)

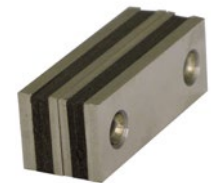
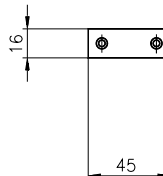
Temperature: max. 120°C


Execution: pole plates zinc coated

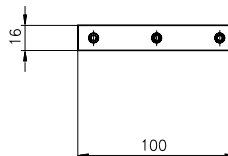
Stock no.	Weight	Lift
 <b>M366145</b>	g 35	N 260



Stock no.	Weight	Lift
 <b>M366245</b>	g 78	N 580



Stock no.	Weight	Lift
 <b>M366100</b>	g 101	N 560

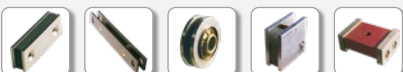


**Overview –  
All chapter**

   
**Your enquiry**

**Technical  
informations**

 top





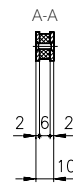
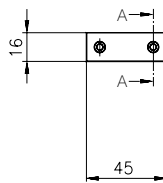
### Sandwich magnets

Materials: **Plastoferrites PF 9/21 p, soft iron**

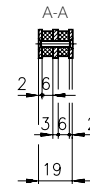
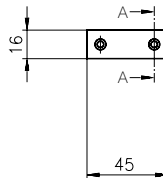
Values (10 N = ~1kg)

Temperature: max. 100°C

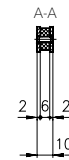
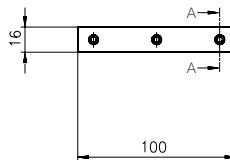
Stock no.	Weight	Lift	Pole plates
	g	N	
<b>M141.5</b>	35	100	zinc coated



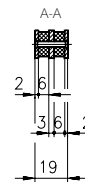
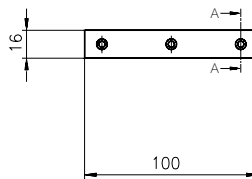
Stock no.	Weight	Lift	Pole plates
	g	N	
<b>M241.5</b>	65	170	nickel plated



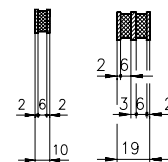
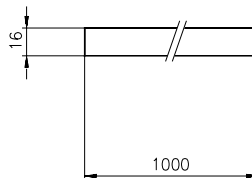
Stock no.	Weight	Lift	Pole plates
	g	N	
<b>M142.5</b>	80	240	nickel plated



Stock no.	Weight	Lift	Pole plates
	g	N	
<b>M143.5</b>	145	420	nickel plated

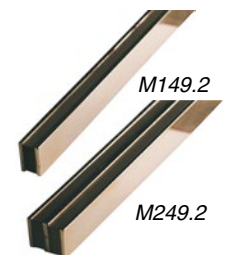


Stock no.	Weight	Lift	Pole plates
	g	N	
<b>M149.2</b>	800	24 /cm	nickel plated
<b>M249.2</b>	1450	42 /cm	nickel plated



M149.2

M249.2

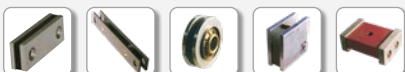


Overview – All chapter

Your enquiry

Technical informations

↑ top





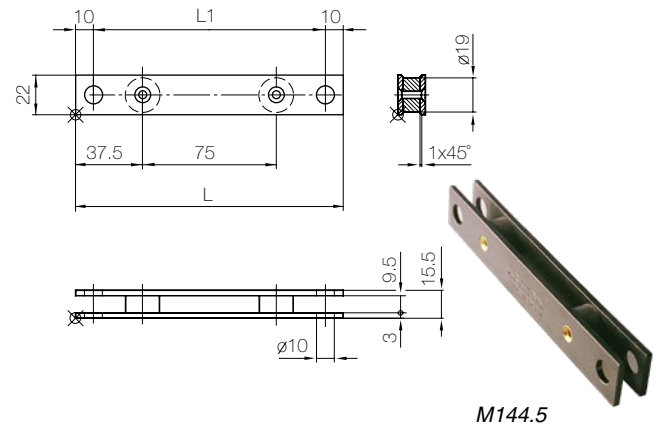
## Magnetic strips


Materials: **AINiCo 40/5**, soft iron, brass

Values (10 N = ~1kg)

Temperature: max. 500°C

Execution: iron pieces browned, riveted



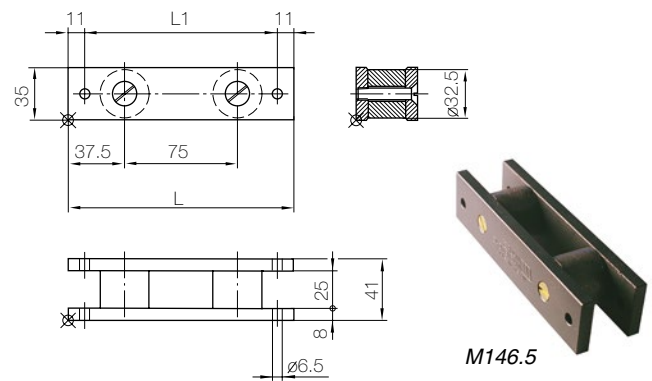
Dimensions, mm		Stock no.	Weight	Lift
L	L1		g	N
150	130	<b>M144.5</b>	179	100
300	280	<b>M145.5</b>	370	175


Materials: **AINiCo 40/5**, soft iron, brass

Values (10 N = ~1kg)

Temperature: max. 500°C

Execution: iron pieces browned, brass screws



Dimensions, mm		Stock no.	Weight	Lift
L	L1		g	N
150	128	<b>M146.5</b>	940	450
300	278	<b>M147.5</b>	1900	800
450	428	<b>M148.5</b>	2850	1100

Overview –  
All chapter

 Your enquiry

Technical  
informations

↑ top





## Magnetic roll

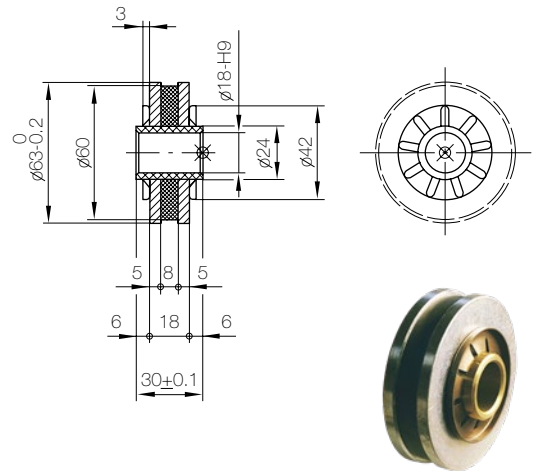
Materials: **HF 28/15**, soft iron, brass

Values (10 N = ~1kg)

Temperature: max. 200°C

Execution: magnet raw, zinc coated iron, magnetised.

Dimensions, mm		Stock no.	Weight	Lift
D	H		g	N
63	30	<b>M150.5</b>	360	150



## Powerful magnets

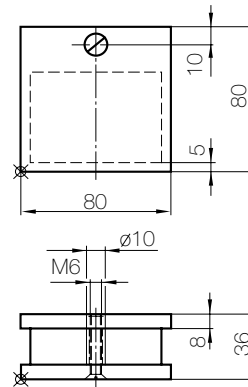
Materials: **HF 28/26**, soft iron, brass

Values (10 N = ~1kg)

Temperature: max. 100°C

Execution: steel parts zinc coated

Stock no.	Weight	Lift
	g	N
<b>MM2004</b>	1462	600



## Fixing magnets

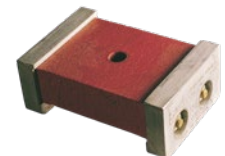
Materials: **AINiCo 43/5**, soft iron, brass

Values (10 N = ~1kg)

Temperature: max. 500°C

Execution: magnet red painted, pole peaces cadmium plated, with 2 pol plates.

Stock no.	Weight	Lift	Dimensions, mm		
			L	B	H
	g	N	L	B	H
<b>M043*</b>	1207	580	98.5	66.7	38.1



\* Delivery

Overview –  
All chapter

Your enquiry

Technical  
informations

↑ top

